

Kohala Preserve Begins Construction

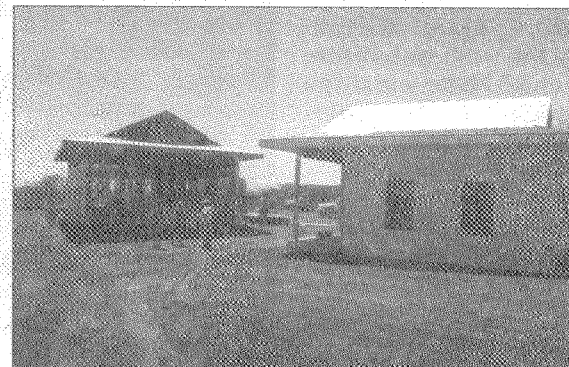
Anyone driving to Mahukona Harbor in recent weeks can see that some new buildings are being erected on the Kohala Preserve property immediately north of the access road. Of the five buildings under construction, only one—a 1,300-square-foot open pavilion (papa'i) with wood floors, rock walls, open sides and a thatched roof reminiscent of an

at Mahukona and Kapa'a Parks are linked to completing the construction of a 'hotel.'

"So, to secure the park improvements, the county earlier this year asked us to comply with an accelerated completion deadline for the six-unit 'interim' hotel. We agreed and are now working with a deadline of October 14th. As a result,

we are scrambling to complete both the hotel and assemble the studies, permits and architectural design needed for the park improvements. It's a challenge, but the end result will be a benefit to the community."

In time the current "hotel" buildings will be replaced by a parking area for a moderate-sized clubhouse and six private guest units to be built at a lower elevation near the papa'i. Together with the papa'i they'll form a 14-acre social core for the overall development of 50 building sites on one to five-acre lots. There will be no large hotel or golf course at Mahukona, just the six private guest units, clubhouse, and building sites.



The duplex units (right) and reception building (left) are designed structurally so they can be split in two and moved at a later date.

upside-down canoe hull—will be permanent.

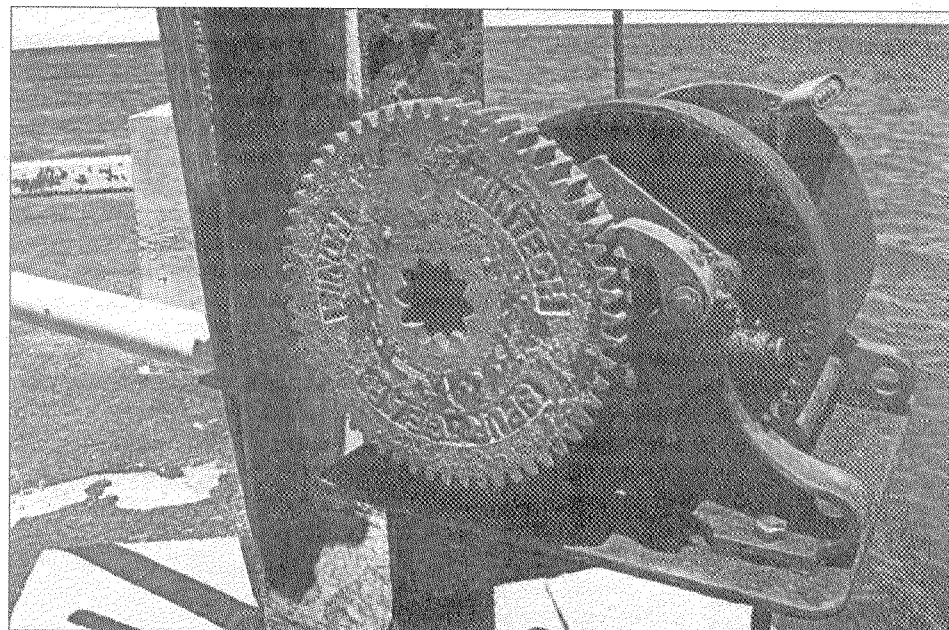
The other four structures closer to the harbor road are, for permit purposes, being called a "hotel." However, they consist of three 480-square-foot duplex cottages and a 1,056-square foot reception/office building. The reason these structures are going up now has more to do with insuring that Kohala Preserve delivers on its promised improvements to Mahukona and Kapa'a parks than any real need for them by Kohala Preserve.

"The county wanted concrete assurance that a laundry list of park improvements at Mahukona and Kapa'a would be built or bonded before the current administration leaves office at the end of the year," explained Kohala Preserve's Project Director Bill Shontell. "Due to the county's interpretation of the language in the Mahukona zoning ordinance, the improvements



The papa'i was designed by Architect Craig Roberts of Hart-Howerton to reflect the history and environment of Mahukona.

Editor's note: Next month's edition of Kohala Mountain News will feature an article on the improvements that are slated for both Mahukona and Kapa'a parks as a result of the Kohala Preserve project.



—staff photo

This old winch lifts small boats in and out of the water at Mahukona.



—staff photo

Dive instructor Jeff Sims (second from right) gets ready to submerge with his students. Left to right: Kristen Lombardo, Jim Slater, Sims and Cody Birk.