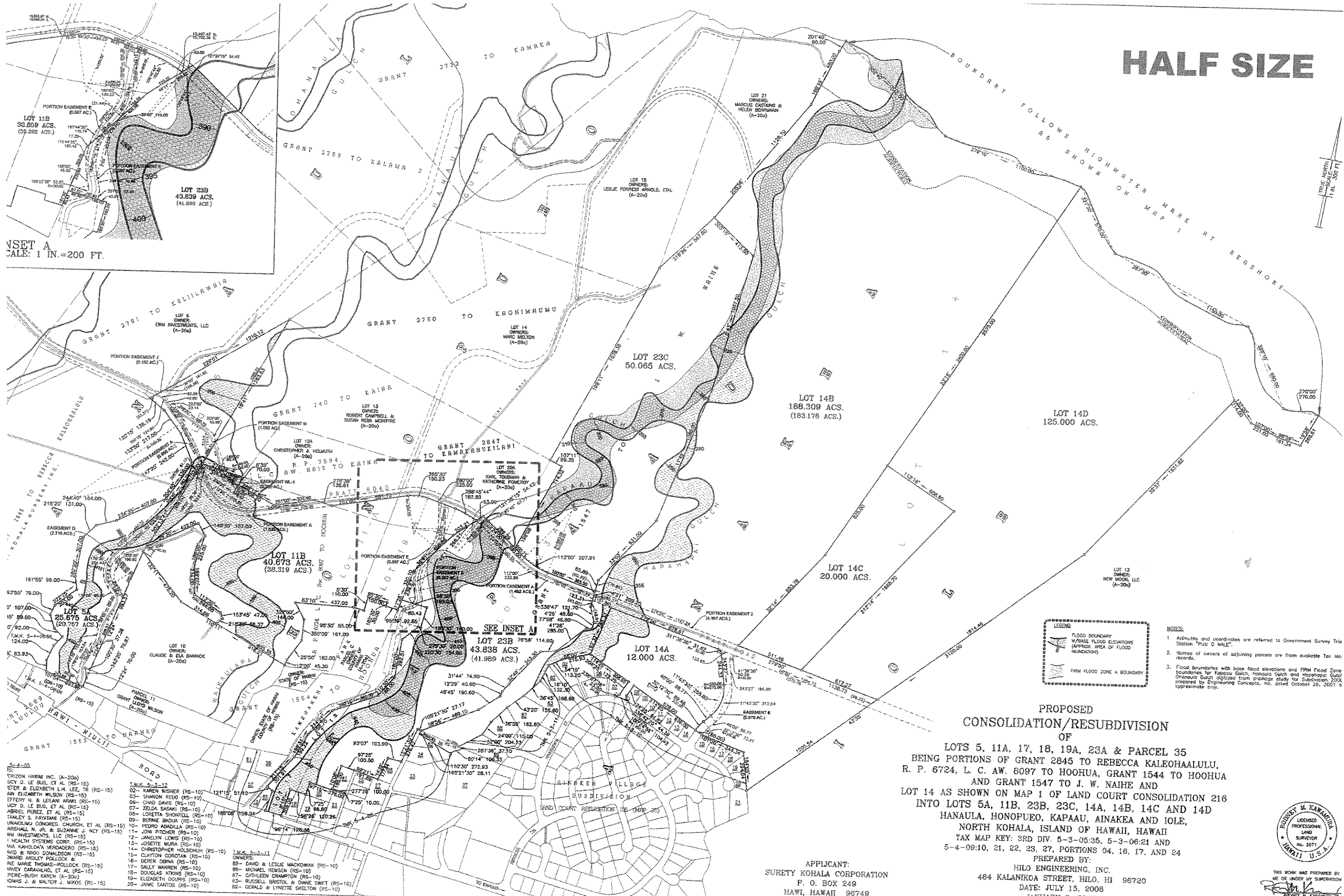


HALF SIZE

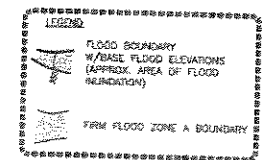
INSET A  
SCALE: 1 IN. = 200 FT.



- 5-4-06
- 01- ERIZON HAWAII INC. (A-200)
  - 02- LUCY D. LE BUS, ET AL. (RS-15)
  - 03- ETER & ELIZABETH L.A. LEE, TR (RS-15)
  - 04- ANN ELIZABETH WILSON (RS-15)
  - 05- EFFERY N. & LELANI ARAKI (RS-15)
  - 06- LUCY D. LE BUS, ET AL. (RS-15)
  - 07- ABRIEL PEREZ, ET AL. (RS-15)
  - 08- TANLEY S. HARTMAN (RS-15)
  - 09- UNWAHUKU CONGREG. CHURCH, ET AL. (RS-15)
  - 10- ARSHALL N. JR. & SUZANNE J. NEY (RS-15)
  - 11- W.N. INVESTMENTS, LLC (RS-15)
  - 12- I HEALTH SYSTEMS CORP. (RS-15)
  - 13- IKA KAHALOHA VERGADERO (RS-15)
  - 14- AWD & NIKKI DONALDSON (RS-15)
  - 15- WARD ARDLEY POLLOCK & RAE MARIE THOMAS-POLLOCK (RS-15)
  - 16- KNOVEY CAROLANHO, ET AL. (RS-15)
  - 17- PERE-BUSH KAREN (A-200)
  - 18- TOMAS J. & WALTER J. MIKOS (RS-15)
  - 02- KAREN WISNER (RS-10)
  - 03- SHARON REED (RS-10)
  - 04- CHAD DAVIS (RS-10)
  - 05- ZELDA SASAKI (RS-10)
  - 06- LORETTA SHONTELL (RS-10)
  - 07- BERNIE BADAJA (RS-10)
  - 08- PEDRO ABADILLA (RS-10)
  - 09- JONI PITCHER (RS-10)
  - 10- JANELYN LEWIS (RS-10)
  - 11- JOSETTE MURA (RS-10)
  - 12- CHRISTOPHER HOLSCHUH (RS-10)
  - 13- CLAYTON CORSTAN (RS-10)
  - 14- DEREK OBINA (RS-10)
  - 15- SALLY WARREN (RS-10)
  - 16- DOUGLAS ATKINS (RS-10)
  - 17- ELIZABETH GOURIS (RS-10)
  - 18- JAMES SANTOS (RS-10)
  - 59- ERARD & LESLIE MACKOWAK (RS-10)
  - 60- MICHAEL REMSEN (RS-10)
  - 61- CATHLEEN CRAMPTON (RS-10)
  - 62- RUSSELL BRISTOL & DIANE SWIFT (RS-10)
  - 63- GERALD & LYNETTE SKELTON (RS-10)

- 5-4-06
- 01- ERIZON HAWAII INC. (A-200)
  - 02- LUCY D. LE BUS, ET AL. (RS-15)
  - 03- ETER & ELIZABETH L.A. LEE, TR (RS-15)
  - 04- ANN ELIZABETH WILSON (RS-15)
  - 05- EFFERY N. & LELANI ARAKI (RS-15)
  - 06- LUCY D. LE BUS, ET AL. (RS-15)
  - 07- ABRIEL PEREZ, ET AL. (RS-15)
  - 08- TANLEY S. HARTMAN (RS-15)
  - 09- UNWAHUKU CONGREG. CHURCH, ET AL. (RS-15)
  - 10- ARSHALL N. JR. & SUZANNE J. NEY (RS-15)
  - 11- W.N. INVESTMENTS, LLC (RS-15)
  - 12- I HEALTH SYSTEMS CORP. (RS-15)
  - 13- IKA KAHALOHA VERGADERO (RS-15)
  - 14- AWD & NIKKI DONALDSON (RS-15)
  - 15- WARD ARDLEY POLLOCK & RAE MARIE THOMAS-POLLOCK (RS-15)
  - 16- KNOVEY CAROLANHO, ET AL. (RS-15)
  - 17- PERE-BUSH KAREN (A-200)
  - 18- TOMAS J. & WALTER J. MIKOS (RS-15)
  - 02- KAREN WISNER (RS-10)
  - 03- SHARON REED (RS-10)
  - 04- CHAD DAVIS (RS-10)
  - 05- ZELDA SASAKI (RS-10)
  - 06- LORETTA SHONTELL (RS-10)
  - 07- BERNIE BADAJA (RS-10)
  - 08- PEDRO ABADILLA (RS-10)
  - 09- JONI PITCHER (RS-10)
  - 10- JANELYN LEWIS (RS-10)
  - 11- JOSETTE MURA (RS-10)
  - 12- CHRISTOPHER HOLSCHUH (RS-10)
  - 13- CLAYTON CORSTAN (RS-10)
  - 14- DEREK OBINA (RS-10)
  - 15- SALLY WARREN (RS-10)
  - 16- DOUGLAS ATKINS (RS-10)
  - 17- ELIZABETH GOURIS (RS-10)
  - 18- JAMES SANTOS (RS-10)
  - 59- ERARD & LESLIE MACKOWAK (RS-10)
  - 60- MICHAEL REMSEN (RS-10)
  - 61- CATHLEEN CRAMPTON (RS-10)
  - 62- RUSSELL BRISTOL & DIANE SWIFT (RS-10)
  - 63- GERALD & LYNETTE SKELTON (RS-10)

SEE INSET A



- NOTES:
1. Azimuths and coordinates are referred to Government Survey Tria Station "PLU O NALE".
  2. Names of owners of adjoining parcels are from available Tax Map records.
  3. Flood boundaries with base flood elevations and FIRM Flood Zone boundaries for Kapaau Gulch, Hanoula Gulch and Hapahapai Gulch are shown on this map. They were prepared from a drainage study for Subdivision 216 prepared by Engineering Concepts, Inc. dated October 26, 2001 to approximate only.

PROPOSED  
CONSOLIDATION/RESUBDIVISION  
OF  
LOTS 5, 11A, 17, 18, 19A, 23A & PARCEL 35  
BEING PORTIONS OF GRANT 2845 TO REBECCA KALEOHAALULU,  
R. P. 6724, L. C. AW. 8097 TO HOOHUA, GRANT 1544 TO HOOHUA  
AND GRANT 1547 TO J. W. NAIHE AND  
LOT 14 AS SHOWN ON MAP 1 OF LAND COURT CONSOLIDATION 216  
INTO LOTS 5A, 11B, 23B, 23C, 14A, 14B, 14C AND 14D  
HANAULA, HONOPUEO, KAPAAU, AINAKEA AND IOLE,  
NORTH KOHALA, ISLAND OF HAWAII, HAWAII  
TAX MAP KEY: 3RD DIV. 5-3-05.35, 5-3-06.21 AND  
5-4-09.10, 21, 22, 23, 27, PORTIONS 04, 16, 17, AND 24

APPLICANT:  
SURETY KOHALA CORPORATION  
P. O. BOX 249  
HAWAII, HAWAII 96749

PREPARED BY:  
HILO ENGINEERING, INC.  
484 KALANIKOA STREET, HILO, HI 96720  
DATE: JULY 15, 2008  
JANUARY 8, 2007



THIS WORK WAS PREPARED BY  
ME OR UNDER MY SUPERVISION  
RODNEY M. KAWAHIRA  
PROFESSIONAL LAND SURVEYOR  
LICENSE NO. 2671  
EXPIRATION DATE OF LICENSE: 4/31